



MAC

**MINERAL AREA
COLLEGE**

Viewbook 2019-20





LEARNING ENVIRONMENT

Small classes, a comfortable campus, award-winning instructors and dedicated advisors make MAC a great place to start.

MAC offers realistic training environments with hands-on learning opportunities. Quality learning facilities include a state-of-the-art library, advanced manufacturing labs and modern science and computer labs.

Small classes, group study areas, a Learning Center, tutoring and field trips bring learning to life and help students succeed.

Enhance your studies and your resumé by participating in the Honors program, Phi Theta Kappa Honor Society, or Study-abroad program.

Online classes are available and free WiFi throughout campus.

PLANNING YOUR FUTURE

Ready for a smooth transition after MAC? You'll find numerous resources to help you succeed in choosing a career or planning a college transfer path.

MAC offers career and hiring fairs, career counseling, resumé writing assistance, employment services, a work-study program, internships and partnerships with area employers.

To ensure your credits transfer smoothly to a university, MAC holds transfer agreements with several universities and dedicated advisors are ready to assist you in planning your courses for a smooth transfer.

AT A GLANCE

3,500	Students (66% women, 34% men)
20:1	Student/faculty ratio
11	Countries represented
1-1.5	Hours from St. Louis or Cape Girardeau
226	Acres
200	College Park residents
\$12 million	Financial aid awarded last year
300	Scholarships awarded each year*

AFFORDABLE TUITION

We give you high-quality instruction at a fraction of the cost.

Cost Per Credit Hour:

\$111	In-District
\$151	Out-of-District
\$203	Out-of-State

Average Tuition and Fees for 1 Year:

MAC	\$3,670
------------	----------------

Missouri Public 4-year Universities

\$8,670

MAC Cost of Attendance Budgets for 2019-20. Tuition and fees for full-time, in-district students. CollegeBoard.org "Average 2018-19 Tuition and Fees at Public Four-Year Institutions by State"

FINANCIAL AID

Visit mineralarea.edu/future-students/financial-aid and complete the MAC Scholarship Application by Feb. 1. Complete separate applications for art, music and theatre. See steps on page 10. The Financial Aid Office handles federal, state, institutional and outside sources of financial aid including: Pell Grant, SEOG, Work Study, Federal Loan/ PLUS Loan, Missouri Student Aid Programs, scholarships, WIOA, Vocational Rehab, VA Vocational Rehab and more.

All costs are subject to change. Check online for updates.

*Not including Athletic scholarships



GRADUATE PROFILE

"We graduated debt-free, so we didn't have student loans to repay as we began our professional lives."

ANDY & REBECCA BUCHANAN of Farmington are glad they chose MAC. Andy works as a vice president loan officer and Rebecca is a family practice nurse practitioner.

STUDENT PROFILES



"Small classes allowed me to establish strong relationships with instructors who were always available for help."

MARCOS DEVOTO was named to Phi Theta Kappa's All-Missouri Academic Third Team while at MAC. He also earned a 4.0 GPA with four consecutive Dean's list honors, an Outstanding Student Award, and First Team NJCAA All-Academic honors with the men's golf team.

"MAC feels comfortable. It's not as intimidating to talk in front of class as it probably is in a big university...sharing this experience with my very best friend is truly amazing."

ELAINA CHAZELLE (left), with friend Emilie Gray, says, "The financial help is tremendous and makes college affordable...why wouldn't you come here?"



"As a Work Study student, I have a great opportunity to turn my classroom studies into a magnificent hands-on greenhouse management experience. It's been amazing."

BILLIE VOYLES is eager to benefit local communities through innovative greenhouse management.

DEGREES & CERTIFICATES

Transfer to a University

- Associate of Arts (AA)
- Associate of Arts in Teaching (AAT)
- Associate of General Studies (AGS)

Prepare for a Career in 2 Years or Less

- Associate of Science (AS)
- Associate of Applied Science (AAS)
- Certificates

CAREER/TRANSFER PATHWAYS

AGRICULTURE/ NATURE

Agriculture.....	AAS, AA (Field of Study)
Agriculture Education	AAT (Area of Concentration)
Pre-Forestry	AA (Field of Study)

ART & COMMUNICATION

Art	AA (Field of Study)
Art Education	AAT (Area of Concentration)
Communications	AA (Field of Study)
Digital Media Technology ¹	AAS, Certificate
English	AA (Field of Study)
Graphic Arts Printing Technology ¹	AAS, Certificate
Music	AA (Field of Study)
Music Ed.	AA (Field of Study), AAT (Area of Concentration)
Pre-Journalism	AA (Field of Study)
Speech	AA (Field of Study)
Theatre	AA (Field of Study)

BUSINESS MANAGEMENT & TECHNOLOGY

Business Administration.....	AA (Field of Study)
Business Computer Programming	AAS
Business Management	AAS, Certificate
Business Management-Accounting	AAS
Business Management-IT Specialist	AAS
Computer Information Systems	AA (Field of Study)
Computer Networking	AAS, Certificate
Computer Networking-Cyber Security	AAS
Computer Sciences	AA (Field of Study)
Office Systems Technology-Admin. Assistant.....	AAS, Certificate
Office Systems Technology-Medical Coding	AAS, Certificate
Sports Management.....	AA (Field of Study)

EDUCATION

Agriculture Education	AAT (Area of Concentration)
Art Education	AAT (Area of Concentration)
Child Development.....	AAS, Certificate
Child Development Associate	Certificate
Early Childhood Ed. (Pre-K-3).....	AAT (Area of Concentration)
Elementary Ed. (Grades 1-6)	AAT (Area of Concentration)
Music Ed.	AA (Field of Study), AAT (Area of Concentration)
Physical Ed	AA (Field of Study), AAT (Area of Concentration)
Secondary Education	AAT (Area of Concentration)
Special Education	AAT (Area of Concentration)

GENERAL STUDIES

General Studies	AA (Field of Study), AGS
-----------------------	--------------------------

HEALTHCARE

Associate Degree Nursing -Advanced Placement	AS
Associate Degree Nursing (RN)	AS
Emergency Medical Technician	Certificate
Medical Laboratory Technician	AAS
Paramedic Community Program	Certificate
Paramedic Technology.....	AAS, Certificate
Physical Therapist Assistant ^{1,6}	AAS
Pre-Dental	AA (Field of Study)
Pre-Dental Hygiene	AA (Field of Study)
Practical Nursing (LPN)	Certificate
Pre-Medicine.....	AA (Field of Study)
Pre-Pharmacy	AA (Field of Study)
Pre-Physical Therapy.....	AA (Field of Study)
Radiologic Technology	AS
Respiratory Therapy ^{1,6}	AS

HISTORY & POLITICAL SCIENCE

History	AA (Field of Study)
Political Science	AA (Field of Study)

INDUSTRIAL & ENGINEERING TECHNOLOGY

Automotive Collision Technology ¹	AAS, Certificate
Automotive Technology ¹	AAS, Certificate
Connector and Conductor ³	Certificate
Construction Building Technology ¹	AAS, Certificate
Electrical Technology ⁵	AAS, Certificate
Electrical/Electronics Technology	AAS, Certificate
Engineering Technology-Design Drafting	AAS, Certificate
Engineering Technology-Manufacturing	AAS, Certificate
Heating, AC and Refrigeration Technology ⁴	AAS, Certificate
Industrial Maintenance.....	AAS, Certificate
Logistics Technician	Certificate
Machine Tool Technology ¹	AAS, Certificate
Pre-Architecture	AA (Field of Study)
Pre-Engineering	AA (Field of Study)
Production Technician	Certificate
Skilled Trades ²	AAS
Welding Technology ¹	AAS, Certificate

LAW

Criminal Justice	Certificate
Criminal Justice-Correctional Administration	AAS
Criminal Justice-Judicial Administration	AAS
Criminal Justice-Law Enforcement.....	AAS
Law Enforcement-1000 hours	Certificate
Pre-Law.....	AA (Field of Study)

MATH & SCIENCE

Biology	AA (Field of Study)
Chemistry.....	AA (Field of Study)
Earth Science	AA (Field of Study)
Mathematics	AA (Field of Study)
Physics	AA (Field of Study)
Pre-Forestry	AA (Field of Study)

MODERN & FOREIGN LANGUAGES

Global Studies.....	Certificate
Modern and Foreign Languages	AA (Field of Study)

PSYCHOLOGY/SOCIOLOGY

Psychology	AA (Field of Study)
Social Work	AA (Field of Study)
Sociology	AA (Field of Study)

¹ Degree or certificate offered in collaboration with one of four area career and technical centers. ² Degree or certificate offered in collaboration with the U.S. Dept. of Labor & Bureau of Apprenticeship Program. ³ Certificate of Completion. ⁴ Cape Articulated Credit. ⁵ Unitek & Cape Articulated Credit. ⁶ A year of coursework must be completed at the Cape Girardeau Career & Technology Center



CLUBS & ORGANIZATIONS

- Archery Club
- Art Club
- Chi Alpha
- Cultural Awareness Club
- Delta Psi Omega
- Little Theatre Guild
- MAC Ambassadors
- MACFlix
- MoSALPN
- National Association For Music Education
- Phi Beta Lambda
- Phi Theta Kappa
- Postsecondary Agriculture Students
- Robotics Club
- Student Activities Council
- Student Government Association
- Student Missouri State Teachers Association
- Student Nurses Association
- Student Radiology Club
- Veterans Organization

Athletics

Men

- Basketball (NJCAA Div. 1)
- Baseball (NJCAA Div. 1)
- Golf (NJCAA Div. 2)
- Cross Country (NJCAA Div. 3)
- Outdoor Track & Field (NJCAA Div. 3)

Women

- Basketball (NJCAA Div. 1)
- Volleyball (NJCAA Div. 1)
- Softball (NJCAA Div. 2)
- Cross Country (NJCAA Div. 3)
- Outdoor Track & Field (NJCAA Div. 3)*

Cheerleading

Wellness

Take advantage of MAC's wellness center and a variety of fitness classes, clubs and activities (such as yoga, archery, Zumba and 5K runs).

Events

- Student Socials
- Midnight Madness
- Homecoming
- Musicals & Plays
- Concerts
- Jazz Festival
- Art Shows
- Spring Picnic
- Lectures
- Travelling Exhibits
- Finals Activities
- Movie Nights
- Field Trips
- Robotics Expo
- Athletic Events
- and more!

Explore

The Mineral Area offers shopping, dining, movies, concerts, athletic events, expos, golfing, 5K runs, fairs and festivals. You'll also find riverways, hiking, camping, floating rivers, fishing and bike trails. Nearby parks include: Pickle Springs, Elephant Rocks, Johnson Shut-Ins, St. Joe, St. Francois, Hawn, Taum Sauk Mountain, and Washington. Travel an hour north and enjoy the St. Louis Zoo, Art Museum, Cardinals Baseball, Six Flags, Fox Theater, Botanical Gardens, live music and entertainment and cultural experiences.

Ask about additional scholarships available through clubs and academic programs such as Art, Music, Theatre and more.



GRADUATE PROFILES

“Believe in yourself at all times. Never let someone tell you, you can’t do something. Only you can define your future. Get out there and make yourself proud!”

CRYSTAL FORD completed her associates degree at MAC, and her bachelors degree through UMSL on the MAC campus. She began her career as a school social worker and transitioned to a rewarding career as a community specialist for BJC Behavioral Health Children’s Team in Farmington. She is currently completing her masters degree.



“I had some incredibly amazing MAC instructors and staff who had a hand in my success...They inspired me and pushed my limits to help me develop the potential I didn’t even know I had.”

DR. AUGUST SCHWALENBERG credits supportive instructors, scholarships and the MAC Excel program as his springboard for reaching his goals. He is now a dentist at Farmington Family Dental.



“I still read to kids in schools...Coach Strege had us do this at MAC, and I naturally continued, because it was a satisfying experience. Kids are the future and I want to be as great and positive of an influence as I possibly can be to them.”

LAMAR A. MORGAN earned All-Conference, All-Region 16 and NJCAA Academic All-American basketball honors at MAC. He continued his education at Coppin State University pursuing a computer science degree.





COLLEGE PARK

SAFE, CLOSE AND FUN!

At College Park, get ready for new friends, movie nights, study groups, sand volleyball, swimming and more! College Park offers activities for residents throughout the year including volleyball tournaments, barbecues, cookouts, hiking and more. You'll enjoy being on campus for athletic events, plays, concerts and club activities.

Room features include:

- Kitchen and Dining Room: dishwasher, stove/oven, microwave, refrigerator, table and chairs
- Bedroom: mattress, bed frame, nightstand, desk, chair, dresser
- Living Room: sofa, chair, coffee and end tables
- Amenities: swimming pool, computer lab, barbecue pavilion, private mailboxes, parking, clubhouse with big-screen TV, sand volleyball courts, laundry facilities

Room and meal pricing:

- 4 bedroom, 2 bathrooms + 15 meals per week = \$2,500
- 2 bedroom, 2 bathrooms + 15 meals per week = \$2,700

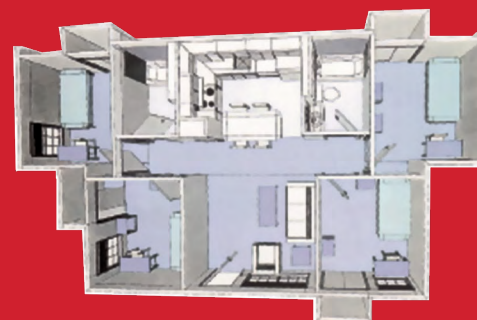
(Per-person. Pricing subject to change.)

SEE FOR YOURSELF! TOUR CAMPUS

Contact Admissions at (573) 518-2108 to schedule a tour.



2-BED, 2-BATH UNIT



4-BED, 2-BATH UNIT



▲ **JOIN OUR COMMUNITY:** Our instructors know your name and are passionate about seeing you succeed.

▼ **AWARD-WINNING:** Learn with talented instructors like Jennifer Sikes and Ellen Miller who recently won the Delta Kappa Gamma Key Woman Educator Award after working with students to establish a campus food pantry.



STAND OUT

There are so many ways to stand out at MAC. Participate in the Honors Program to enhance your studies, receive special honors, dive deeper into your interests, and

GET STARTED

Apply to MAC

Apply for Financial Aid

Feb. 1 Scholarship Deadline

Apr. 1 FAFSA Priority Deadline

Aug.

Sept.

Oct.

Nov.

Dec.

Jan.

Feb.

Mar.

Apr.

1. APPLY TO MAC

- ☐ Fill out the application at <https://MineralArea.edu>.
- ☐ Submit your transcripts — both from your high school and any college(s) you have attended. Transcripts must be mailed directly from the respective school to Mineral Area College.
- ☐ Submit your ACT or Accuplacer scores. To schedule the Accuplacer test, please contact our Assessment Office at assessment@MineralArea.edu or (573) 518-2202.

2. APPLY FOR FINANCIAL AID

- ☐ Complete the FAFSA (school code 002486) at <https://studentaid.ed.gov/sa/afsa>. Priority deadline is April 1.
- ☐ Submit the MAC Scholarship application at <https://MineralArea.edu>. Priority deadline for scholarships is February 1.
- ☐ If you're participating in the A+ program, please be sure to complete your A+ activation form each semester through your MyMAC account.

Let us help! Contact (855) MAC-4YOU or Admissions@MineralArea.edu.

Andrea Kemper, Emilie La Breyere and Sami Meyer look forward to helping you navigate the process.



▲ **FINALS WEEK:** Take advantage of many activities to help you destress and do your best.

▼ **SIMULATION LABS** are used by students to prepare for real-life scenarios. To make them even more realistic, Theatre students often help with role-playing for the Allied Health and Law Enforcement programs.



CARDS Orientation & Enroll in Classes

Classes Begin

May

June

July

Aug.

3. ATTEND ORIENTATION AND ENROLL IN CLASSES

- ☐ Once accepted to MAC, you'll be invited to sign up for CARDS, MAC's freshman orientation program. The program features important information on student services, financial aid, billing, housing and more.
- ☐ During orientation, an academic advisor will help you plan your class schedule. You'll have a chance to get your student ID at the campus bookstore, locate classrooms, and become familiar with resources at my.mineralarea.edu.

STUDENT PROFILE

"I've gained different perspectives on life. One of my roommates is from the Netherlands and another's family is from the Dominican Republic. By sharing our diverse backgrounds, we learn from each other."



▲ **LIAM HICKS** of Toronto, Canada ranked nationally in home runs and average on-base percentage categories in 2019 while pursuing his degree Associate of Arts degree with an emphasis in Sports Management.



CALL, CLICK, OR VISIT



Greater
St. Louis
Area

**Park Hills
Main Campus**

POTOSI ★
OUTREACH CENTER

FREDERICKTOWN
OUTREACH CENTER ★

★
PERRYVILLE
HIGHER
EDUCATION
CENTER

●
Cape
Girardeau

●
Poplar Bluff



MINERAL AREA COLLEGE

(855) MAC-4YOU • www.MineralArea.edu

P.O. Box 1000, 5270 Flat River Road, Park Hills, MO 63601

Fredericktown Outreach Center

1450 Madison 517, Fredericktown, MO 63645
(573) 783-7932

Fredericktown@MineralArea.edu

Admissions/Tours

admissions@MineralArea.edu
(573) 518-2228

Assessment/Testing

assessment@MineralArea.edu
(573) 518-2202

Bookstore

macbookstore@MineralArea.edu
(573) 518-2106

Campus Housing

collegepark@MineralArea.edu
(573) 518-1330

Financial Aid

finaid@MineralArea.edu
(573) 518-2133

Registrar's Office

registrar@MineralArea.edu
(573) 518-2130

Perryville Higher Education Center

108 S. Progress Drive, Perryville, MO 63775
(573) 547-4143

Perryville@MineralArea.edu

Potosi Outreach Center

1 Trojan Drive, Potosi, MO 63664
(573) 438-2156 ext. 43

Potosi@MineralArea.edu

Mineral Area College does not discriminate on the basis of race, color, national origin, gender, disability, age, religion, creed, or marital or parental status.

For more information, call the Title VI, IX, Sec. 504 and ADA coordinator at (573) 431-4593 or U.S. Dept. of Education, Office of Civil Rights.

If you have special needs as addressed by the Americans with Disabilities Act and need this publication in an alternative format, notify the Access Director, (573) 431-4593 or Mineral Area College, P.O. Box 1000, Park Hills, MO 63601. Reasonable efforts will be made to accommodate your special needs.

MAC Communications - August 2019

SEE FOR YOURSELF! TOUR CAMPUS

Contact Admissions at (573) 518-2108 to schedule a tour.